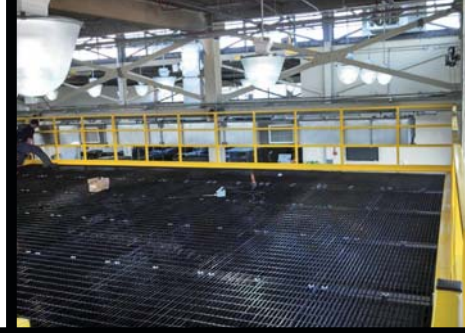
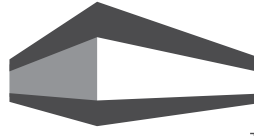


**EBTECH
INDUSTRIAL**
Modular Building Solutions™



UPFAST™

STRUCTURAL STEEL MEZZANINE SYSTEMS

INNOVATIVE SOLUTIONS | MODULAR FLEXIBILITY



Contract Holder
Contract GS-07F-0647W



UPFAST™ MEZZANINES | APPLICATIONS

INNOVATIVE SOLUTIONS | MODULAR FLEXIBILITY

Engineered to Maximize Available Space

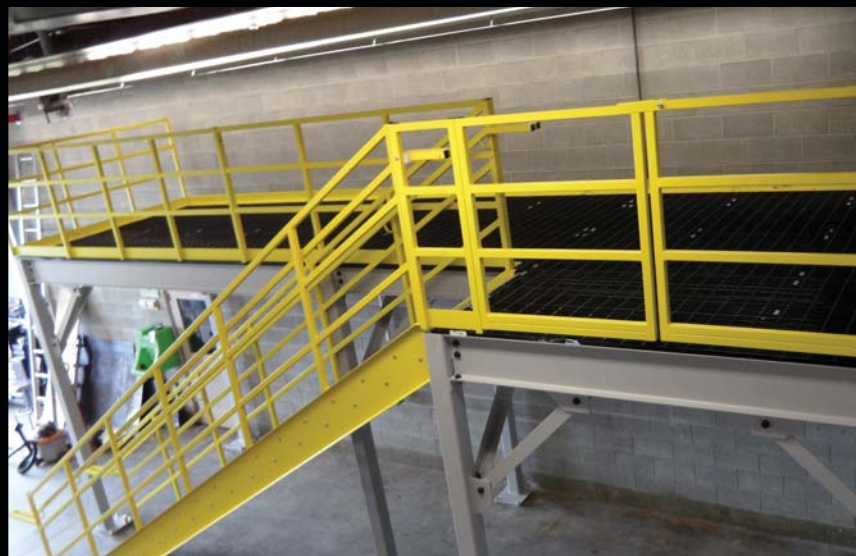
Today's successful businesses must utilize every square foot they have, including vertical space. The most economical solution to use that space is an Ebtech Modular Structural Steel Mezzanine. Our mezzanines turn existing vertical space into productive space without a costly building addition.

We design and manufacture our mezzanines in our own factory in western Pennsylvania. Our all-structural steel mezzanines are engineered for maximum strength, stability and safety. Ebtech's structural mezzanines have minimal limitations in span, meaning fewer obstructions below. Our mezzanine systems are designed to grow with the needs of your business.

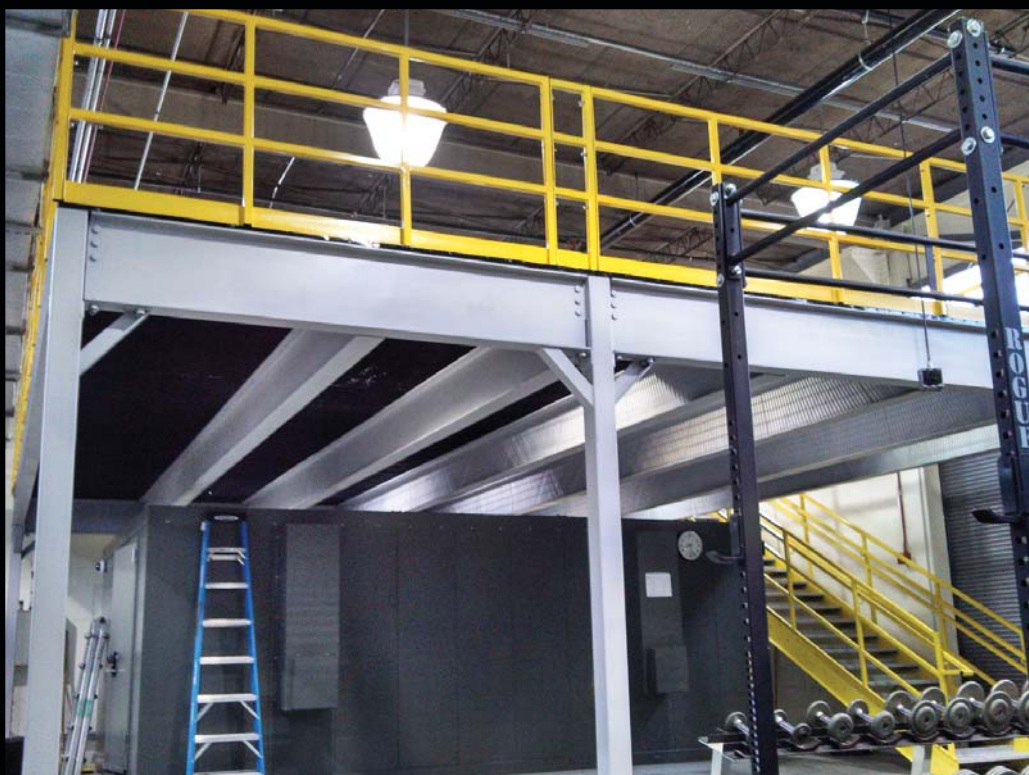
Ebtech Structural Mezzanines are ideal for:

- Supporting In-Plant Offices
- Archive Storage
- Catwalks
- Conveyor Platforms
- Equipment Platforms
- Parts Storage
- Observation Decks
- Vision Towers
- Elevated Platforms
- Work Platforms
- Range Towers
- Superstructures & Framing
- Warehousing

Our systems include a complete line of customizable components such as handrails, stairs, safety gates, security caging, guard rails, bollards, column protection and a wide choice of flooring materials.



UPFAST™ MEZZANINES | INSTALLATION FEATURES



- Clearly labeled installation drawings and corresponding bills of material
- Components are labeled to match drawing labels
- Completely modular components
- All bolt-together construction
- Columns are completely equipped and ready to have beams bolted to them
- Pre-drilled holes in column connection plates match pre-drilled holes in beams for easy aligning and installation
- Unique connection angle for column/beam assembly provides speedy assembly and a safe work area. The angles have beam connection holes to doubly secure the beam to column union.
- Handrail sections are completely factory-welded
- Stair stringers have the handrail sections factory-welded in place

a mezzanine
can **double** or **triple**
your existing floor space - for up to
80% less
than the cost of an addition.



The Ebtech Advantage

Ebtech designs and manufactures structural mezzanines in the USA in our factory.

We use only high strength structural steel components for high capacity and long life.

Our engineers are experienced in providing cost effective designs.

Our manufacturing facility is known for its quality and short lead times.

We react to your needs based on the premise that customers are our first priority.

www.ebtechindustrial.com
800.369.4321

EBTECH
INDUSTRIAL
Modular Building Solutions™



UPFAST™ MEZZANINES | COMPONENTS

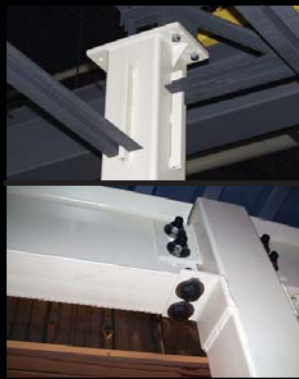
BAR JOIST

Open web bar joists are designed to support long spans while reducing the framing weight and number of vertical support columns. Open construction offers framework for installation of mechanical, electrical and sprinkler systems.



I-BEAM SUPPORT MEMBERS

Structural I-beams of ASTM A36 feature additional reinforcement for maximum strength and resistance to point loading. Universal I-beam shape offers application flexibility and minimal deck thickness for higher overhead clearance.



FOOTPLATES

Base plate of ASTM A36 steel supports with maximum stability, distributing load evenly and minimizing pressure between base plate and floor.



SWING GATE

Offers easy access for forklift and palletized loading. Features drop hinge design for complete gate removal, and available spring-loaded hinges for safety.



STAIRS

All one-piece stair assemblies are fully factory-welded. Open or closed stair treads of formed textured checker plate provide non-skid surface. Complies with four major building codes for industrial applications.



FLOORS

Standard decks include tongue-and-groove plywood, steel bar grate, diamond deck, plank deck and concrete. Special deck materials are available upon request.



HANDRAILS

Cleanly constructed of closed square tube horizontal rails and 4" angle kick plate. Strong one-piece welded assembly lends additional support to the structure. Complies with major building codes for industrial applications.



TELESCOPING OR SLIDING GATES

Designed for areas with restricted space, where swing gates could not function. Telescoping gate slides within larger-bore side rails. Sliding gate rolls aside on casters. Both allow unrestricted access to mezzanine levels without taking up extra space.



American Welding Society
Sustaining Company Member

EBTECH INDUSTRIAL
Modular Building Solutions™



INNOVATIVE SOLUTIONS | MODULAR FLEXIBILITY

GSA Contract Holder
Contract GS-07F-0647W

800.369.4321 | 724.628.6100

**2241 Industrial Drive, Suite C
Connellsville, PA 15425**

www.ebtechindustrial.com

CLEANROOMS • COOLERS & FREEZERS • HIGH WALL SYSTEMS • IN-PLANT OFFICES • INTERIOR BUILDINGS • EXTERIOR BUILDINGS • COMMUNICATION TOWERS • LABORATORIES • STEEL BUILDINGS & TRAILERS
GUARD SHELTERS • HOUSING • OBSERVATION TOWERS • PROCESS ENCLOSURES • STRUCTURAL MEZZANINES • STAIRS • LANDINGS • CONEX REPURPOSING • FLAT PAK™ • ISO KITS™ • VAULTS • PARTITIONS
BLAST AND BALLISTIC PROTECTIVE SYSTEMS • SUPERSTRUCTURES • BLAST VIEWING BUNKERS • RDS™ BUILDINGS • INTERMODAL STEEL BUILDING UNITS • PROCESS EQUIPMENT ENCLOSURES • SCIF BUILDINGS